

**OFFICE OF THE VICE PRESIDENT FOR
RESEARCH AND INNOVATION**

STATE OF HAWAI'I
UNIVERSITY OF HAWAI'I
OFFICE OF THE VICE PRESIDENT
FOR RESEARCH AND INNOVATION

POSITION ORGANIZATION CHART
SUMMARY

CHART IV

**FISCAL AND ADMINISTRATIVE
OPERATIONS**
Chart IV A

STEM PRE-ACADEMY
Chart IV A

COST STUDIES AND DATA ANALYTICS
Chart IV A

ACADEMY FOR CREATIVE MEDIA
Chart IV A

RESEARCH SUPPORT CENTER
Chart IV A

**OFFICE OF STRATEGIC HEALTH
INITIATIVES**
Chart IV A

OFFICE OF RESEARCH SERVICES

Information Systems Services
Financial Compliance
Contracts and Grants Administration
Extramural Funds Accounting

Chart IV B

OFFICE OF RESEARCH COMPLIANCE

Human Studies Program
Animal Welfare Program
Biosafety Program
Animal and Veterinary Services Program
Office of Research Integrity
Office of Export Controls

Chart IV C

**OFFICE OF INNOVATION AND
COMMERCIALIZATION**

Office of Technology Transfer
UH Ventures

Chart IV D

APPLIED RESEARCH LABORATORY

Chart IV E

CHART UPDATED
DATE: July 1, 2022

OFFICE OF THE PRESIDENT
 UNIVERSITY OF HAWAI'I SYSTEM

STATE OF HAWAI'I
 UNIVERSITY OF HAWAI'I
 OFFICE OF THE VICE PRESIDENT
 FOR RESEARCH AND INNOVATION

POSITION ORGANIZATION CHART
 CHART IV A

OFFICE OF THE VICE PRESIDENT FOR RESEARCH AND INNOVATION
 Org Code: SWVPRI
 22380100

Vice President, #89538	1.00
Administrative Officer, Sr, PBC, #81001	1.00
Admin Services Manager, PBC, #96673	1.00
Associate VP *	

FISCAL AND ADMINISTRATIVE OPERATIONS
 30380110

Administrative Officer, Sr, PBC, #80038	1.00
Administrative Officer, Sr, PBB, #81901	1.00 (B)
Administrative Officer, PBB, #81652	1.00 (W)
Administrative Officer, PBB, #81798	1.00 (W)
Adm & Fisc Supp Sp, PBA, #77571	1.00
Adm & Fisc Supp Sp, PBA, #78836	1.00 (W)
Human Resources Specialist, Sr, PBB, #81885	1.00

STEM PRE-ACADEMY
 22380601

Administrative Services Manager, PBC, #77694	1.00
Web Developer, PBB, #80151	1.00
Program Specialist, PBB, #78459	1.00
Program Manager, PBB, #78020	1.00
Program Specialist, PBB, #77294	1.00
Program Specialist, PBB, #77862	1.00

COST STUDIES AND DATA ANALYTICS
 30380120

Administrative Services Manager, PBD, #77804	1.00
Fiscal Specialist, PBB, #81802	1.00

ACADEMY FOR CREATIVE MEDIA
 22380602

Admin Program Officer, #89557	1.00
Administrative Officer, PBB, #80272	1.00

RESEARCH SUPPORT CENTER
 30380130

Administrative Services Manager, PBD, #81645	1.00
Administrative Officer, PBB, #80379	1.00 (W)

OFFICE OF STRATEGIC HEALTH INITIATIVES
 22380600

Administrative Services Manager, PBD, #77672	1.00 **
--	---------

17.00 Perm (A)
4.00 Perm (W)
1.00 Perm (B)
1.00 Temp (A) **

* position to be redescribed

OFFICE OF THE VICE PRESIDENT
 FOR RESEARCH AND INNOVATION

OFFICE OF RESEARCH SERVICES
 22380200

Director, #89006	1.00
Administrative Officer, Sr, PBB, #81982	1.00
Office Asst IV, SR-10, #15410	1.00

INFORMATION SYSTEMS SERVICES
 30380210

IT Manager, PBC, #78631	1.00
IT Specialist Sr, PBC, #78837	1.00 (W)
IT Specialist, PBB, #81777	1.00

FINANCIAL COMPLIANCE
 30380220

Fiscal Manager, PBD, #81389	1.00
Fiscal Sp Sr, PBC, #81017	1.00
Fiscal Sp, PBB, #78800	1.00 (W)

CONTRACTS & GRANTS ADMINISTRATION
 30380230

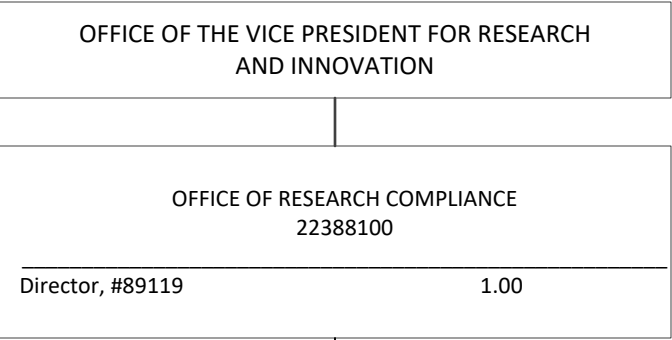
Admin Services Mgr, PBC, #78632	1.00
Adm & Fisc Supp Sp, PBA, #78839	1.00 (W)
Adm & Fisc Supp Sp, PBA, #78635	1.00
Adm & Fisc Supp Sp, PBA, #78010	1.00
Contracts & Grt Sp, PBB, #81471	1.00
Contracts & Grt Sp, PBB, #81259	1.00
Contracts & Grt Sp, PBB, #80976	1.00 (W)
Contracts & Grt Sp, PBB, #79125	1.00
Contracts & Grt Sp, PBB, #81940	1.00
Contracts & Grt Sp, PBB, #80581	1.00
Contracts & Grt Sp, PBB, #80808	1.00
Contracts & Grt Sp, PBB, #81139	1.00
Contracts & Grt Sp, PBB, #78029	1.00
Contracts & Grt Sp, PBC, #77464	1.00 (W)
Contracts & Grt Sp, PBB, #80399	1.00 (W)

EXTRAMURAL FUNDS ACCOUNTING
 30380240

Fiscal Manager, PBC, #81930	1.00
Fiscal Sp, PBB, #79159	1.00
Fiscal Sp, PBB:	2.00
#78363 (1.00), #78637 (1.00)	
Fiscal Sp, PBB:	8.00
#80145 (1.00), #80138 (1.00)	
#81961 (1.00), #80147 (1.00)	
#78361 (1.00), #80139 (1.00)	
#80195 (1.00), #78618 (1.00)	
Fiscal Sp, PBB, #78369	1.00 (W)
Fiscal Sp, PBB, #78634	1.00 (W)
Adm & Fisc Supp Sp, PBA, #78636	1.00
Adm & Fisc Supp Sp, PBA, #81688	1.00
Fiscal Sp, PBB, #80206	1.00
Fiscal Sp, PBB, #78838	1.00

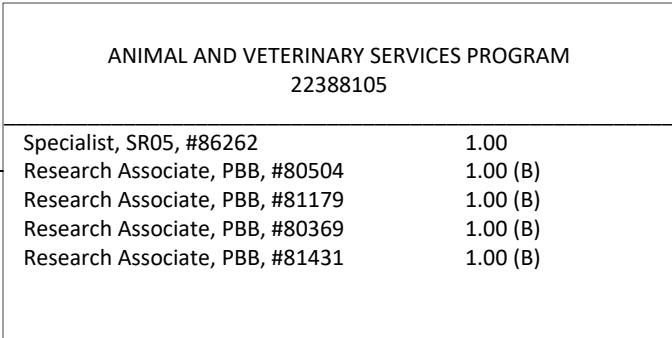
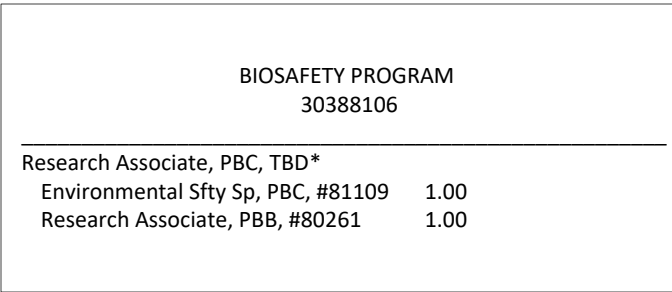
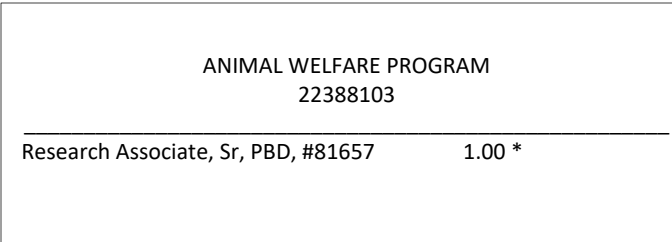
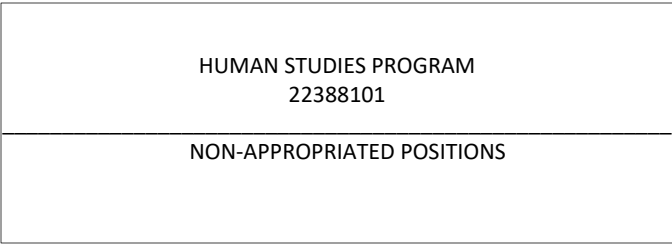
34.00 Perm (A)
 8.00 Perm (W)

STATE OF HAWAI'I
 UNIVERSITY OF HAWAI'I
 OFFICE OF THE VICE PRESIDENT
 FOR RESEARCH AND INNOVATION
 OFFICE OF RESEARCH SERVICES
 POSITION ORGANIZATION CHART
 CHART IV B



STATE OF HAWAI'I
 UNIVERSITY OF HAWAI'I
 OFFICE OF THE VICE PRESIDENT
 FOR RESEARCH AND INNOVATION
 OFFICE OF RESEARCH COMPLIANCE

POSITION ORGANIZATION CHART
 CHART IV C



6.00 Perm (A)
4.00 Perm (B)

* to be redescribed

CHART UPDATED
DATE: July 1, 2022

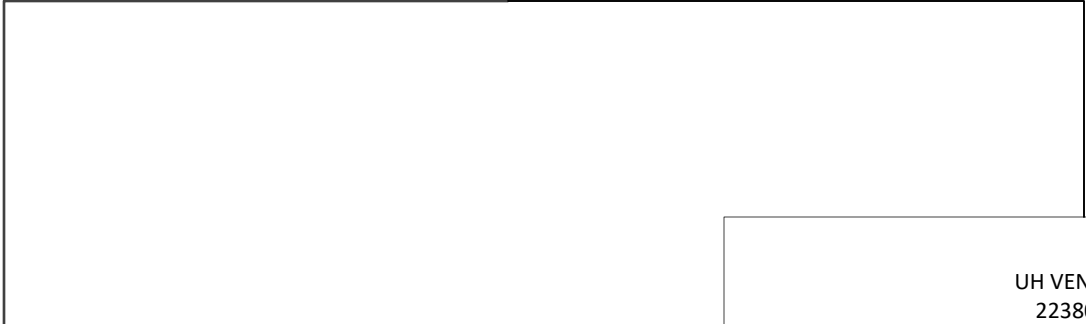
OFFICE OF THE VICE PRESIDENT FOR RESEARCH
AND INNOVATION

OFFICE OF INNOVATION AND COMMERCIALIZATION
22380300

Director, #89435 1.00
Admin Svcs Mgr, PBC, #77309 1.00 (W)

STATE OF HAWAI'I
UNIVERSITY OF HAWAI'I
OFFICE OF THE VICE PRESIDENT
FOR RESEARCH AND INNOVATION
OFFICE OF INNOVATION AND
COMMERCIALIZATION

POSITION ORGANIZATION CHART
CHART IV D



OFFICE OF TECHNOLOGY TRANSFER
22380301

NON-APPROPRIATED POSITIONS

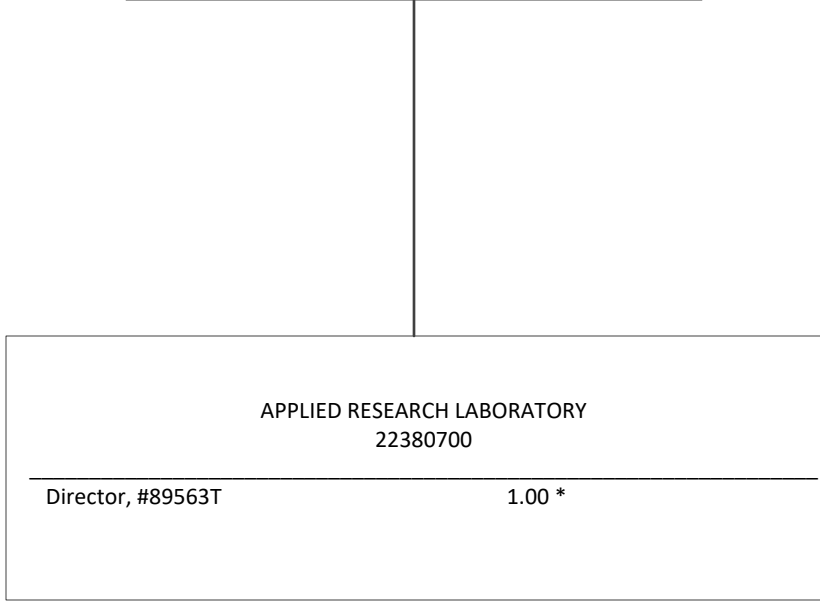
UH VENTURES
22380302

NON-APPROPRIATED POSITIONS

1.00 Perm (A)
1.00 Perm (W)

CHART UPDATED
DATE: July 1, 2022

OFFICE OF THE VICE PRESIDENT FOR RESEARCH
AND INNOVATION



STATE OF HAWAI'I
UNIVERSITY OF HAWAI'I
OFFICE OF THE VICE PRESIDENT
FOR RESEARCH AND INNOVATION
APPLIED RESEARCH LABORATORY

POSITION ORGANIZATION CHART
CHART IV E

* Non-appropriated position